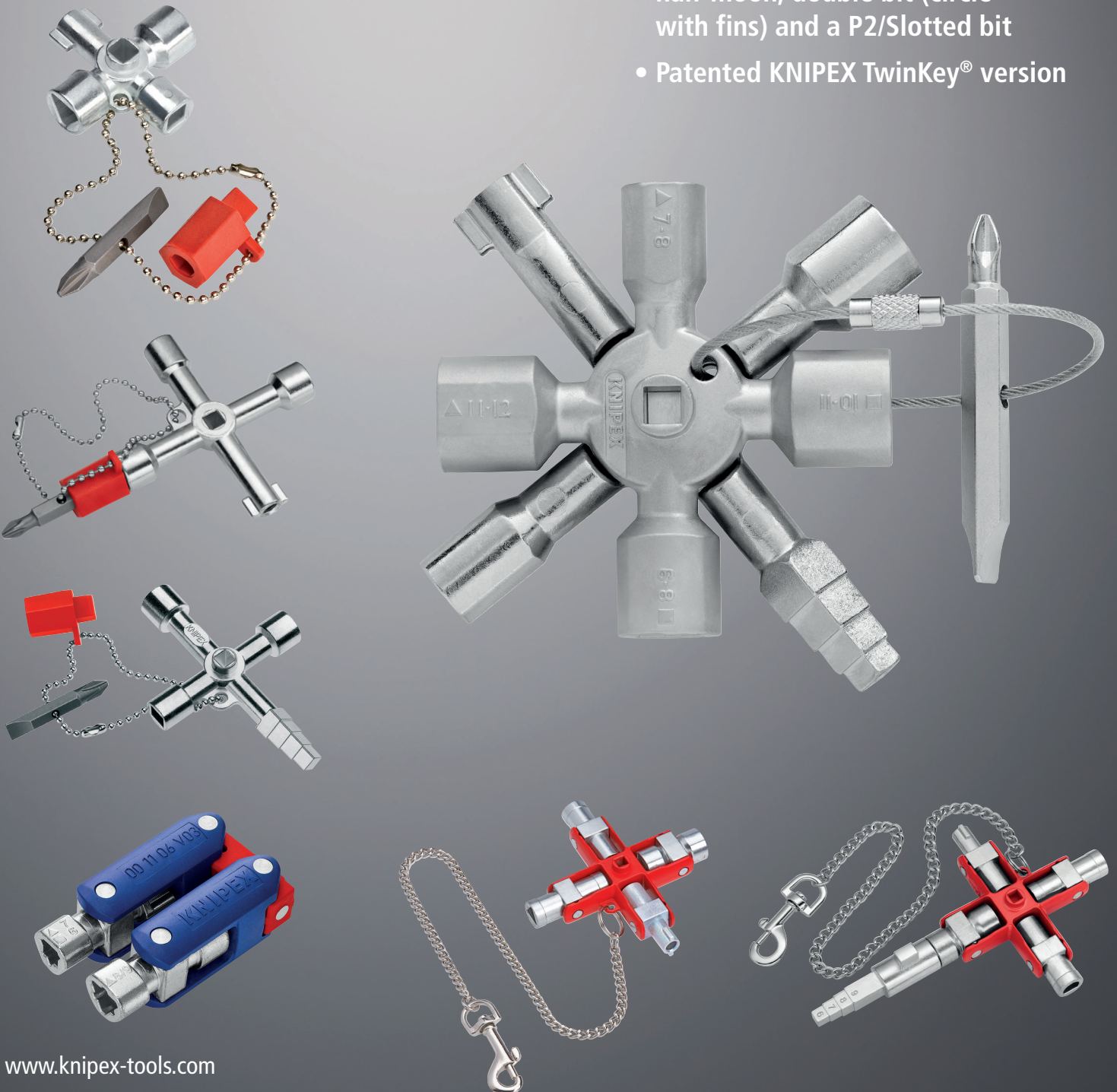


# Control Cabinet Keys

For all standard cabinets and shut-off systems

- Made in Germany
- Zinc die-cast
- Most common profiles – outside square, inside square, triangle, half-moon, double bit (circle with fins) and a P2/Slotted bit
- Patented KNIPEX TwinKey® version



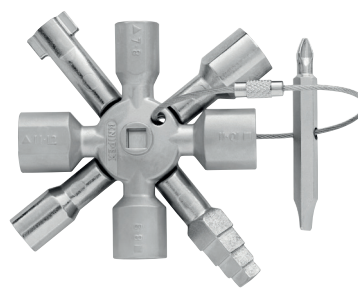


**Control Cabinet Keys**

For all standard cabinets and shut-off systems

00

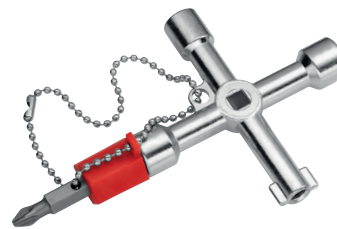
- > Multifunctional keys for actuation of locking systems
- > To use with control cabinets and shut-off systems for the supply of gas, water and electricity
- > Lightweight zinc die-cast designs



00 11 01



00 11 02



00 11 03



00 11 04



00 11 06



00 11 06 V01



00 11 06 V03

Part Number	Detachable chain and snap hook	1/4" Bit Holder (Built into the tool inside one key profile)	1/4" Bit Holder (as an adapter)	⌀ inch	mm											mm				6	3-5						
					5	6	6-7	7	7-8	8	8-9	9-10	10-11	6	7	8	9	10	7			7-8	8	8-9	9	9-10	10-11
00 11 01	-	X	-	P2 3/64 x 9/32	X	-	X	-	-	-	X	-	-	X	X	X	X	-	-	X	-	-	X	-	X	X	
00 11 02	-	-	X	P2 3/64 x 9/32	X	X	-	-	X	-	-	-	-	-	-	-	-	-	-	X	-	-	-	-	-	X	
00 11 03	-	-	X	P2 3/64 x 9/32	X	X	-	-	X	-	-	-	-	-	-	-	-	-	-	X	-	-	-	-	-	X	
00 11 04	-	-	X	P2 3/64 x 9/32	X	-	-	X	-	X	-	-	-	X	X	X	X	-	-	-	-	-	X	-	-	-	
00 11 06	X	X	-	-	X	X	-	X	-	-	X	-	-	-	-	-	-	X	-	X	-	-	X	-	X	X	
00 11 06 V01	X	X	-	-	X	X	-	X	-	X	-	-	X	X	X	X	X	X	X	X	-	X	-	X	-	X	X
00 11 06 V03	-	-	-	-	X	X	-	X	-	X	-	-	-	-	-	-	-	X	-	X	-	X	-	-	-	X	

Part Number	Carded Packaging	↔		Description	Number of Profiles
		inch	mm		
00 11 01	X	3 3/4	95	KNIPEX TwinKey® Universal Control Cabinet Key	13 (plus P2 and slotted)
00 11 02	X	1 3/4	44	KNIPEX Control Cabinet Keys	5 (plus P2 and slotted)
00 11 03	X	3	76	KNIPEX Control Cabinet Keys	5 (plus P2 and slotted)
00 11 04	X	3 1/2	90	KNIPEX Profi-Key	8 (plus P2 and slotted)
00 11 06	X	3 1/2	90	KNIPEX Universal Key	9
00 11 06 V01	X	6 1/4	160	KNIPEX Universal Key "Construction"	14
00 11 06 V03	X	5	127	KNIPEX Control Cabinet Key DoubleJoint	8

KTIPEM19055